

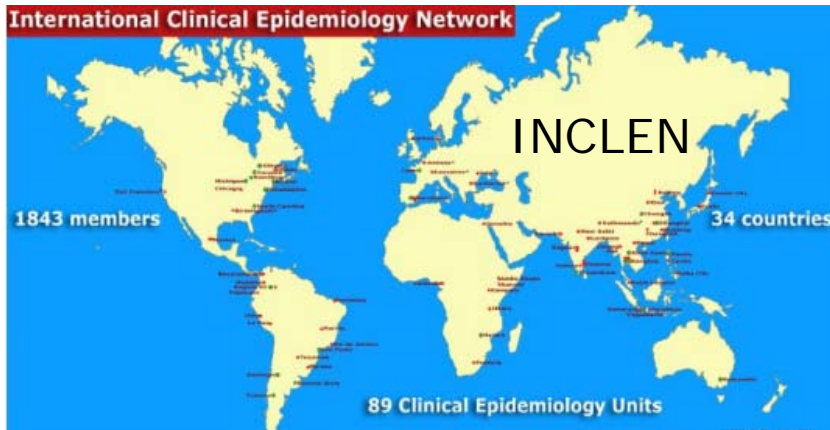


International Society for Evidence-Based Practice?



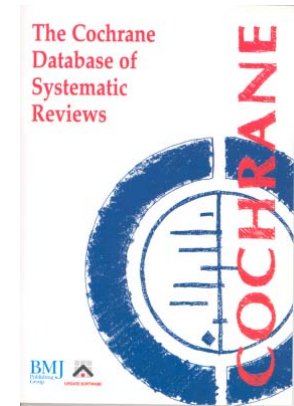
EBM Centres in

- Oxford, McMaster, Riyadh, Tabriz, Taipei, Philippines, Kuala-Lumpur, Jakarta, Australia, NZ, ...



GIMBE[®]

Gruppo Italiano per la Medicina Basata sulle Evidenze

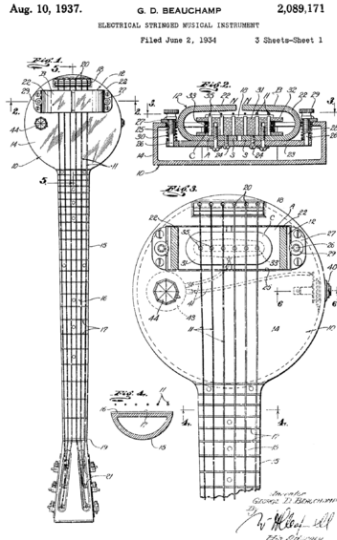




Aims: Foster Evolution of EBHC



1672



1931





Standing Committees for EBHC topics

Top

Debate

Highly accessed

Open Access

Abstract

Sicily statement on evidence-based practice

Background

Martin Dawes¹ ✉, **William Summerskill**² ✉, **Paul Glasziou**³ ✉, **Antonino Cartabellotta**⁴ ✉, **Janet Martin**⁵ ✉, **Kevork Hopayian**⁶ ✉, **Franz Porzsolt**⁷ ✉, **Amanda Burls**⁸ ✉ and **James Osborne**⁹ ✉

Discussion

Summary

Competing interests

Authors contr...

Acknowledgements

References

Pre-publication history



Italy
London,

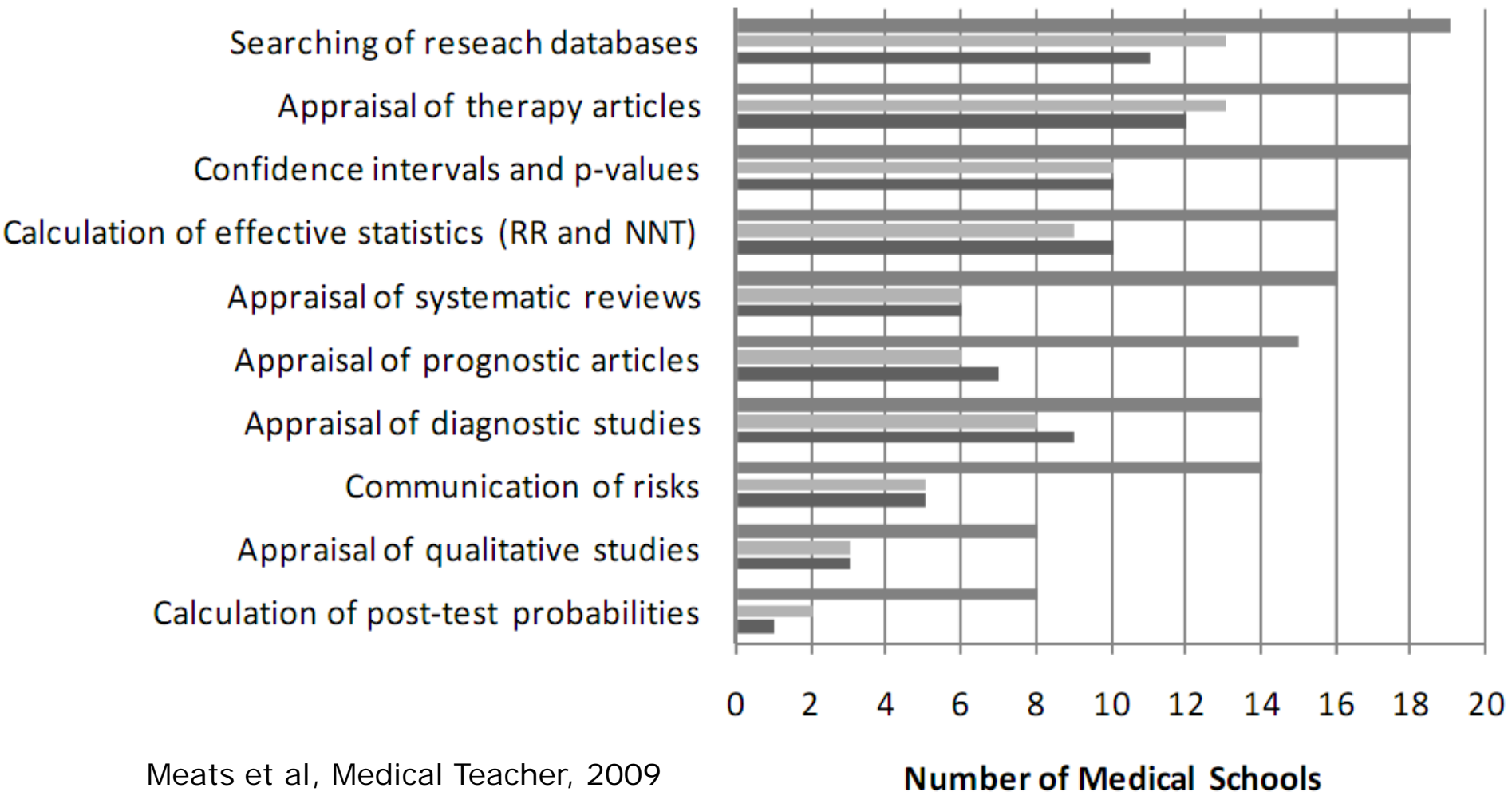
com



International Surveys of EBHC teaching



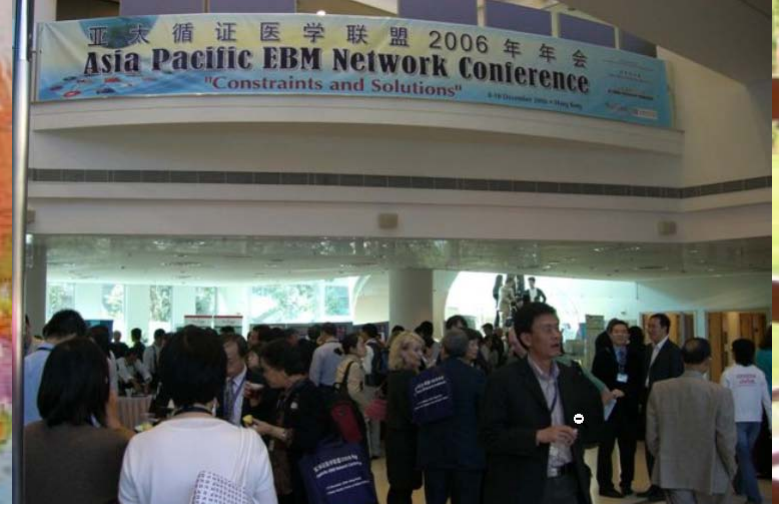
■ Covered ■ Practiced ■ Assessed





Linking Regional Conferences

Sicily International EBHC Meeting:
2001, 2003, 2005, 2007, 2009



2nd Pan-Arab EBM conference



National Academic Mailing List Service

[Subscriber's Corner](#) [Email Lists](#)



EVIDENCE-BASED-HEALTH List

1,500 members



Q1: Would you join the Society?

- Yes
- No



What would be the priority for you

- Conference
- Newsletter
- Academic journal of EBHC
- Online discussion
- Teaching materials



Which is most important for you?

- Attending EBHC workshop (as co-tutor, tutor)
- Regional EBHC conference
- International EBHC conference



If the Society provided a newsletter, discussion lists, teaching materials, discount for conference

- \$200 / year
- \$100 / year
- \$50 / year
- \$25 / year
- \$10 / year



Next steps

- Steering committee established
- Society launch in 2010
- Ideas, volunteers – please contact me
(paul.glasziou@dphpc.ox.ac.uk)





Unified Critical Appraisal

EBM notebook

The GATE frame: critical appraisal with pictures

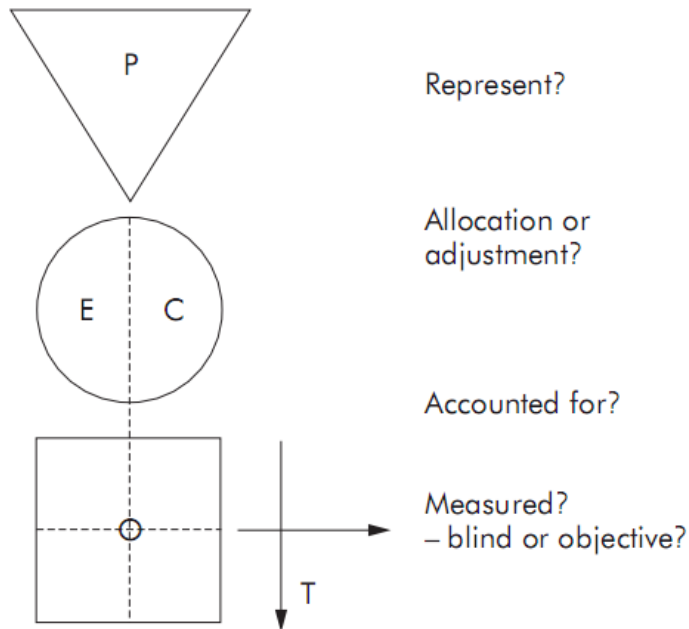


Figure 6 Study validity (RAAMbo).

Rod Jackson



... but EBM is (comparatively) small

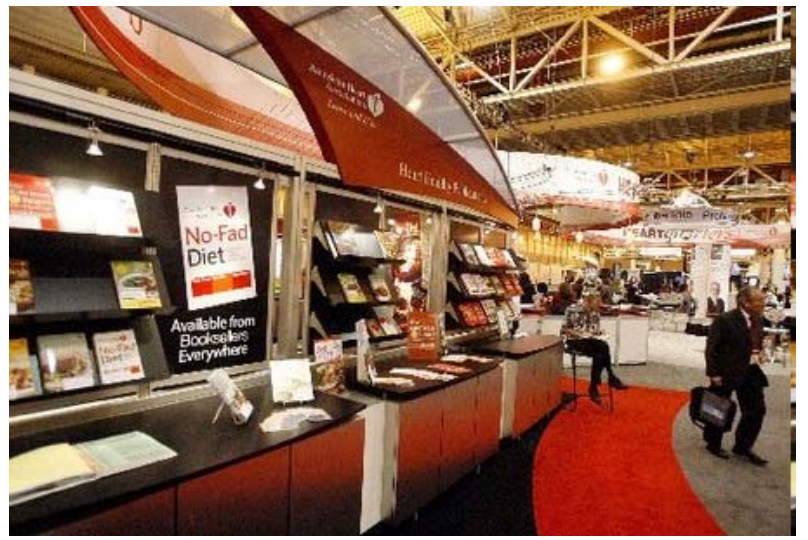
Medical Education



1,800 attendees

American Heart Association  | SCIENTIFIC SESSIONS 2009

Exhibits: November 15-17 | Sessions: November 14-18 | Orlando, Florida



30,000 attendees