

# Goodbye

#ebhc2015



# Your feedback

We will ask your feedback through an online survey in the next weeks



Excellent  
 Very good  
 Good  
 Average  
 Poor

# Our feedback

- The attendance of many EBHC leaders, with their “pearls”
- Your perfect adherence to the conference schedule
- Your confirmation of appreciation and thanks
- Your warmth, affection and kindness
- The availability of hotel and restaurants staff to satisfy all needs and necessities
- The "clement" weather





7<sup>th</sup> International Conference for EBHC Teachers and Developers

# Evidence for sustainability of healthcare

## Increasing value, reducing waste

Taormina (Italy), 28<sup>th</sup> - 31<sup>st</sup> October 2015





# GIMBE's Staff



# Further thanks to... Caparena Hotel

- ✓ Roberto Cardone, *General manager*
- ✓ Giuseppe Galati, *Event manager*
- ✓ Annamaria Imbimbo, *House keeper*
- ✓ Giuseppe Condoreli & Raffaele Nicotra, *Maitres*
- ✓ Giorgio Rimmaudo, *Chef*
- ✓ Sandro Mazza, *Chef "for cakes"*
- ✓ Oriana Favero, *Booking office manager*
- ✓ Giuseppe Cifali, *Administrative office manager*
- ✓ Luigi Carbone & Mario Campagna, *Maintenance*

Every other staff member not mentioned

## The Value Century

1948-1971 Free

1980's Effectiveness & Evidence

- all effective treatments should be

- all ineffective treatments are of

- some effective treatments are of

1990's Cost-effectiveness

2000's Quality and Safety

2010 and for the rest of the

# VAL





EVBM  
SPQR







ALVE  
EVIDENCE - BAYES METHOD  
30/10/15  
Raf  
Raf. New

ALVE  
EVIDENCE - BATES MOPAN

20/10/15

~~John Nuttall, M.D.~~

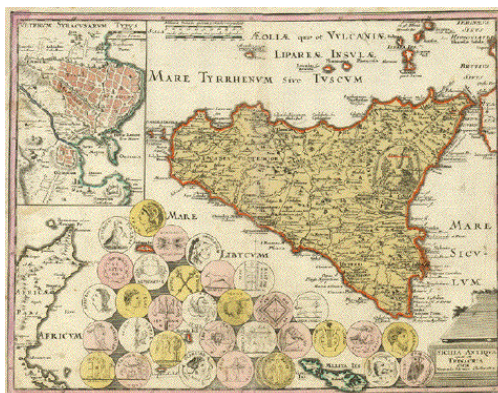


# Looking forward to the 8<sup>th</sup> EBHC International Conference



## Sicily

October, 25<sup>th</sup> – 28<sup>th</sup> 2017



Ladies and gentlemen...

THANK YOU





Ladies and gentlemen...

THANK YOU