

The Tunisian clinical practice adaptation: Management of diabetes during pregnancy



INEAS

الهيئة الوطنية للتقييم و الاعتماد في المجال الصحي
Instance Nationale de l'Evaluation
& de l'Accréditation en Santé

Dr Mohamed Ben Hamouda
EBHC Taormina 09/11/2019

Background

INEAS

- Public authority
- Scientifically independent
- Ministry of health



Background

- Capacity Building Workshop for Clinical Practice Guideline Adaptation
- ADAPTE Process
- The AGREE II tool



Aims

- Adaption of a CPG on "Diabetes in pregnancy"



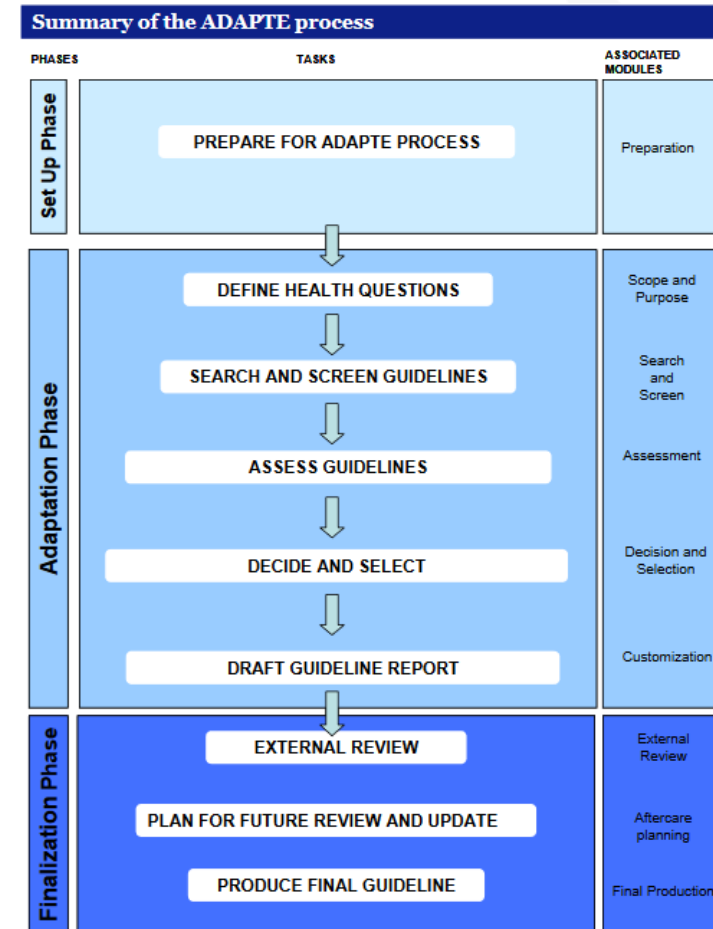
Reduce mortality

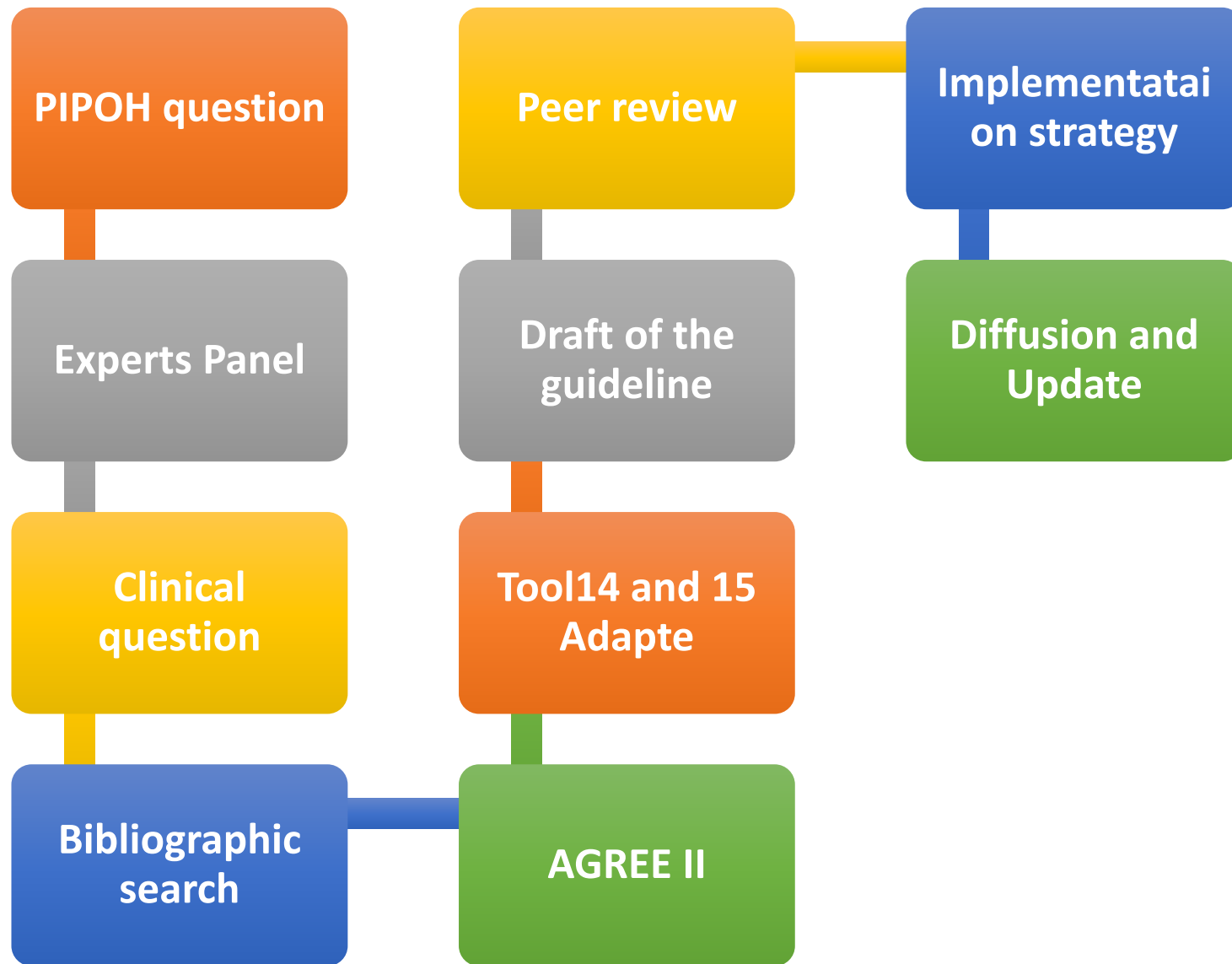
Reduce morbidity

Harmonization of
clinical services
and practices

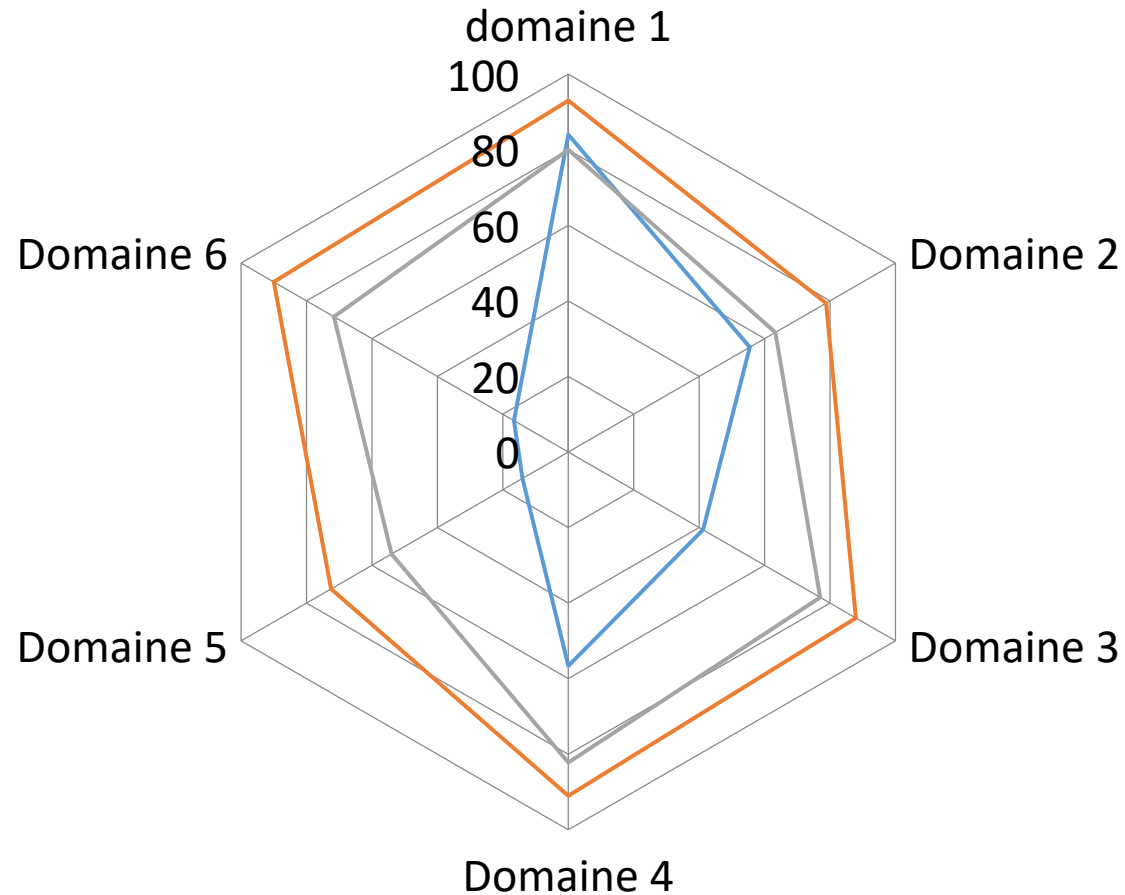
Methodology

- ADAPTE methodology:
 - ✓ Set up phase
 - ✓ Adaptation Phase
 - ✓ Finalization phase





Results



- American College of obstetricians and gynecologists 2013
- NICE 2015
- 2012 Endocrine Society Clinical Practice Guideline on pregnancy

NCC-WCH

Version 2.1

Diabetes in pregnancy

Management of diabetes and its complications
from preconception to the postnatal period

NICE guideline 3

Methods, evidence and recommendations

Wednesday February 25th, 2015

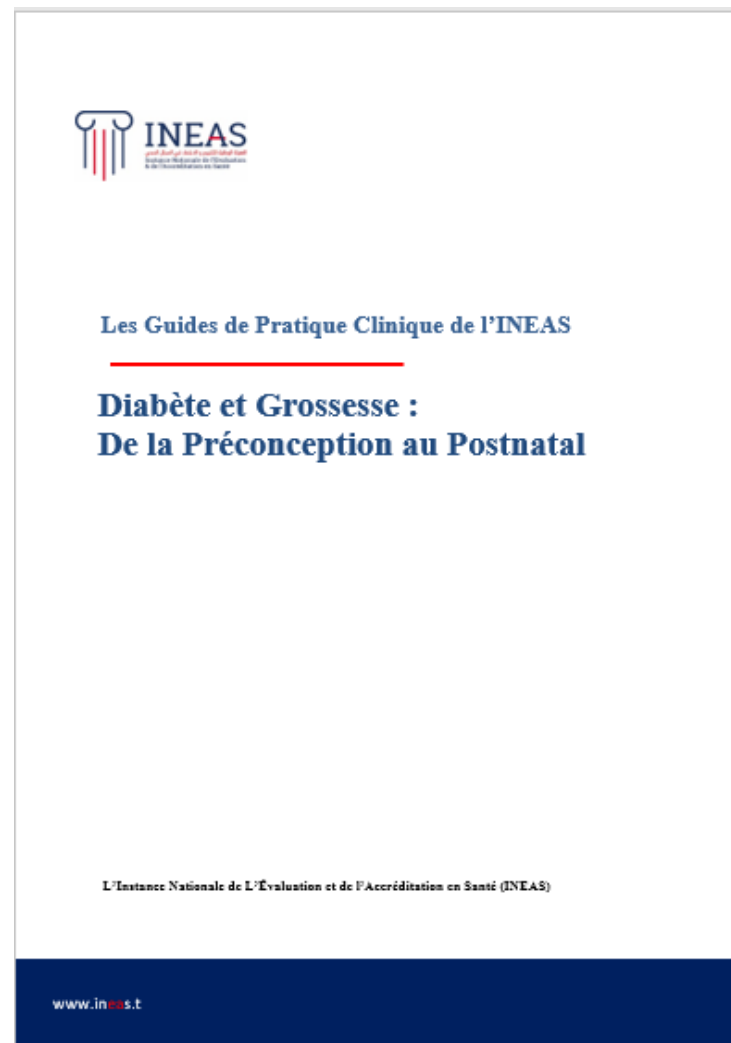
Final

*Commissioned by the National Institute for
Health and Care Excellence*



Publication & diffusion

- www.ineas.tn
- www.g-i-n.net



Limits

- **INEAS ressources:**
 - Human ressources
 - Financial ressources
- **Resistance to change**
 - Some medical associations
 - Some policy makers
- **Capacity buildings of healthcare professionals**



The adaptation of this GPC :

- two years
- 45 meetings
- TND 15,000





INEAS

الهيئة الوطنية للتقييم والاعتماد في المجال الصحي
Instance Nationale de l'Evaluation
& de l'Accréditation en Santé

